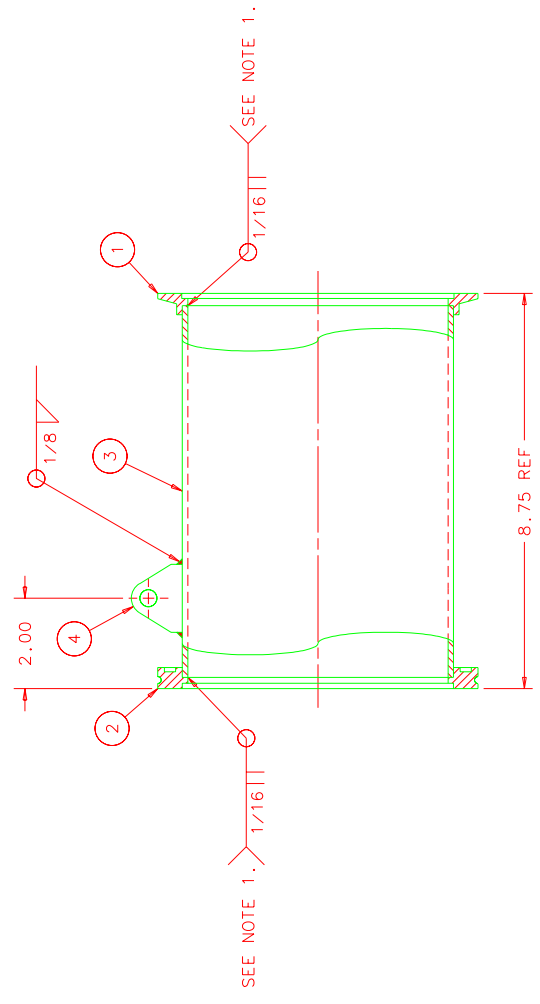


1 2 3 4

REV	DESCRIPTION	DRAWN	DATE
		APPROVED	



SEE NOTE 1. 1/16 SEE NOTE 1. 1/16

ITEM	PART NO.	DESCRIPTION OR SIZE	QTY.
4	MB-384410	TURBUCKLE EYE	1
3	COML	TUBING 6.000 O.D. x .065 WALL x 8.23 LG., STN. STL. 304	1
2	COML	FLANGE, 6" ISO NV160, MDC P/N 813002	1
1	COML	FLANGE, 6" ISO NV160, MDC P/N 813017	1

UNLESS OTHERWISE SPECIFIED		ORIGINATOR	R.L. SCHMITT	11-FEB-2002
.XX	ANGLES	DRAWN	W. CYKO	11-FEB-2002
± .01	±	CHECKED		
1. BREAK ALL SHARP EDGES TO 1/16" MAX. SCALE DRAWING		APPROVED		
2. DIMENSIONS BASED UPON ANSI Y14.5M-1982		USED ON		
3. DIMENSIONS BASED UPON ANSI Y14.5M-1982				
4. MAX. ALL MACH. SURFACES				
125 ✓				
		MATERIAL	MD-384409	
			SEE ABOVE PARTS LIST	

**FERMI NATIONAL ACCELERATOR LABORATORY**  
UNITED STATES DEPARTMENT OF ENERGY

PPD/MECHANICAL DEPT.  
CDMS REFRIGERATOR PIPING  
SPOOL WELDMENT, 6" X 8.75 LG.

SCALE	DRAWING NUMBER	SHEET	REV
1/2	9213.300-MC-384408	1 OF 1	1
CREATED WITH: Ideas8m4		GROUP: PPD/MECHANICAL DEPARTMENT	

1. VACUUM NOTE: NO LEAK SHALL BE DETECTABLE ON THE MOST SENSITIVE SCALE OF A HELIUM LEAK DETECTOR WITH A MINIMUM SENSITIVITY OF 10<sup>-9</sup> ATM CC/SEC.

NOTES:

4 3 2 1