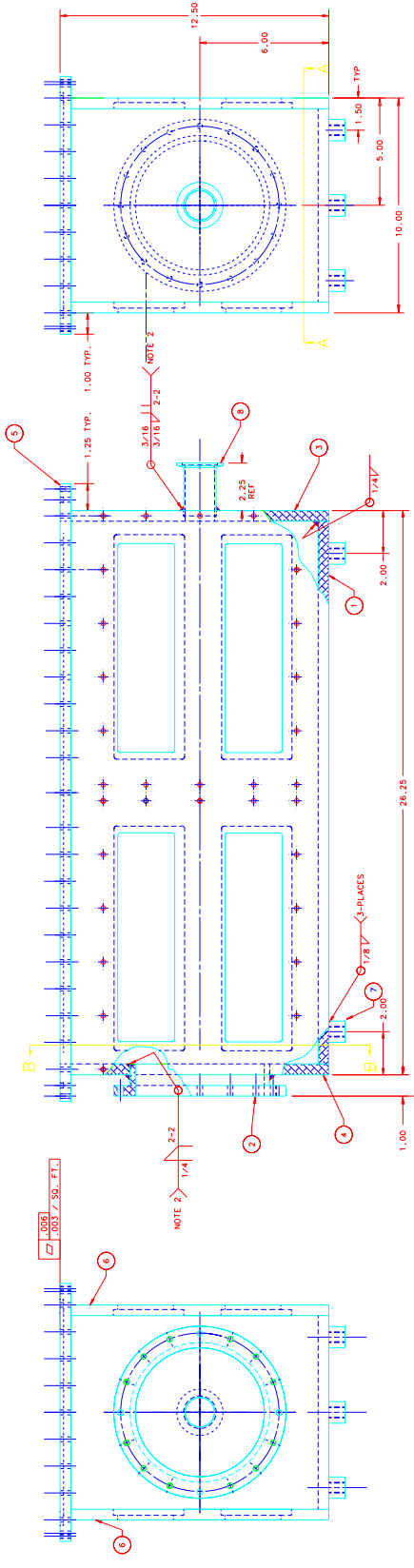
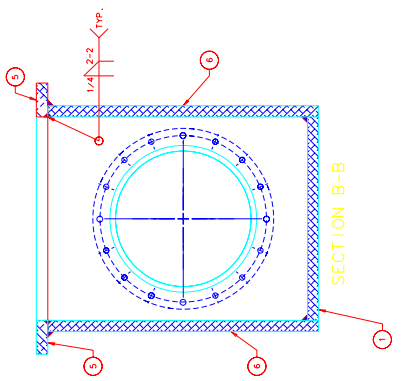
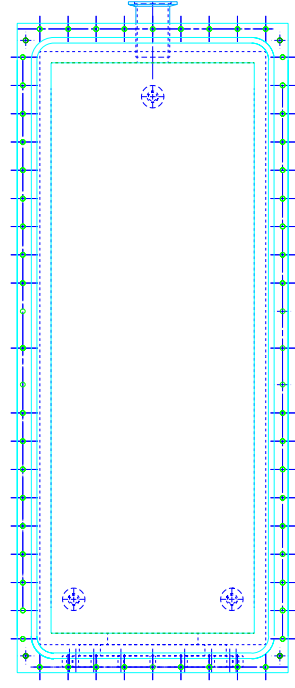
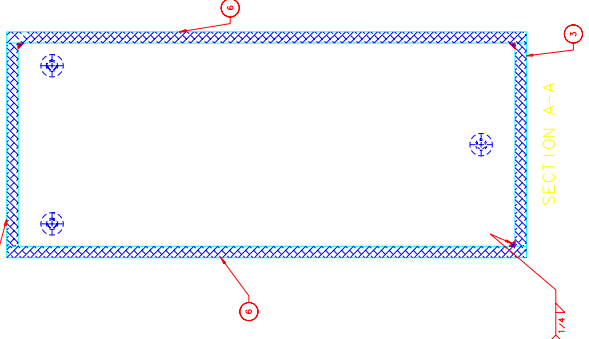


REV.	DESCRIPTION	DRAWN	DATE
A	WAS 384968	REEDER	8-15-00



REV.	DESCRIPTION	DATE
A	WAS 384968	8-15-00

REV.	DESCRIPTION	DATE
1	LEVELING BOSS	3
2	SIDE PLATE	2
3	RECTANGULAR FLANGE	1
4	FRONT PLATE	1
5	END PLATE	1
6	CIRCULAR FLANGE	1
7	BOTTOM PLATE	1

UNLESS OTHERWISE SPECIFIED PURCHASE FROM R. SCHMITZ

1. WELD ALL JOINTS TO MEET WELDING CODE ME-384958 ITEM 1

2. MATERIALS TO BE USED SHALL BE AS SHOWN IN THE PARTS LIST

3. DIMENSIONS ARE IN INCHES UNLESS OTHERWISE SPECIFIED

4. ALL DIMENSIONS ARE TO CENTER UNLESS OTHERWISE SPECIFIED

5. DIMENSIONS ARE TO CENTER UNLESS OTHERWISE SPECIFIED

6. DIMENSIONS ARE TO CENTER UNLESS OTHERWISE SPECIFIED

7. DIMENSIONS ARE TO CENTER UNLESS OTHERWISE SPECIFIED

8. DIMENSIONS ARE TO CENTER UNLESS OTHERWISE SPECIFIED

NOTE 2: VACUUM LEAK TEST NO LEAK SHALL BE DETECTABLE ON THE MOST SENSITIVE SCALE OF A MINIMUM SENSITIVITY OF 10⁻⁸ ATM CC/SEC

NOTE 1: EXTERNAL LEAK TESTS MUST BE INTERMITTENT AND EXCESSIVE PRESSURES SHOULD BE THOROUGHLY CLEANED AND DECREASED.

NOTES:

1. EXTERNAL LEAK TESTS MUST BE INTERMITTENT AND EXCESSIVE PRESSURES SHOULD BE THOROUGHLY CLEANED AND DECREASED.

NOTES:

1. EXTERNAL LEAK TESTS MUST BE INTERMITTENT AND EXCESSIVE PRESSURES SHOULD BE THOROUGHLY CLEANED AND DECREASED.

NOTES:

1. EXTERNAL LEAK TESTS MUST BE INTERMITTENT AND EXCESSIVE PRESSURES SHOULD BE THOROUGHLY CLEANED AND DECREASED.