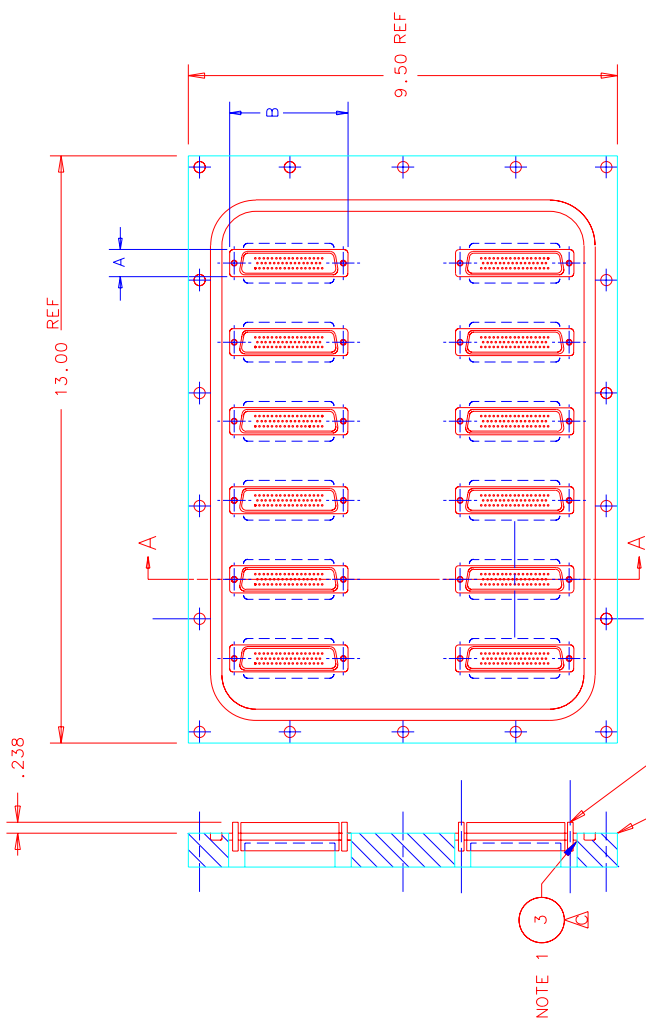


1 2 3 4

REV.	DESCRIPTION	DRAWN	DATE
A	WAS SOLDER RECTANGLE DWG. #MB-397001	REEDER	8-28-00
B	CONNECTOR CHART ADDED	C. NILA	8-28-00
C	ITEM #10 WAS ITEM #8 DET #3 WAS #281 SOLDER	REEDER	9-15-00
		C. NILA	9-15-00
		REEDER	11-21-00
		C. NILA	11-27-00



CONNECTOR SIZE A

ITEM	DIM A	DIM B
8A	.605	2.628
15A	.607	2.630
4A	.607	2.631
12A	.607	2.633
13A	.608	2.626
10A	.608	2.629
11A	.608	2.630
20A	.608	2.631
18A	.609	2.631
9A	.609	2.627
16A	.609	2.627
17A	.609	2.622

- 2: VACUUM LEAK TEST
NO LEAK SHALL BE DETECTABLE ON THE MOST SENSITIVE SCALE OF A HELIUM LEAK DETECTOR WITH A MINIMUM SENSITIVITY OF 10^{-9} ATM CC/SEC
- A1: BONDING PROCEDURE
 - A: CLEAN BRASS PLATE AND SIDES OF CONNECTORS
 - B: MIX 2 PART EPOXY THOROUGHLY BY WEIGHT OR VOLUME
 - C: PLACE PLATE ON A FLAT SURFACE AND INSERT CONNECTORS. IF NECESSARY, PUT BLOCKS UNDER CONNECTORS TO SUPPORT THEM AT CORRECT HEIGHT
 - D: APPLY EPOXY EVENLY TO BOTH SURFACES TO BE JOINED
 - E: COAT THE INNER SURFACE AROUND THE PINS WITH KL5 SEALANT. SEALANT SHOULD COAT THE GLASS SLEEVES. DO NOT ALLOW SEALANT TO GET ON PINS

ITEM NO.	PART NO.	DESCRIPTION OR SIZE	QTY. REQ.
3	COML	3M SCOTCH WELD EPOXY ADHESIVE #1838 B/A GREEN 2 PART	AS REQ'D
2	COML	HERMETIC D-SUB THROUGH BULKHEAD DETRONICS #DR18HS-509-720-LOCKPOST FURNISHED BY FERMLAB	12
1	MC-397170	CONNECTOR HOLDER	1

PARTS LIST

UNLESS OTHERWISE SPECIFIED	ORIGINATOR	DATE
.XX	R. SCHMITT	6-00
.XXX	REEDER	6-00
± .02	C. NILA	6-00
± .005	R. SCHMITT	6-00

1. BREAK ALL SHARP EDGES
2. DO NOT SCALE DWG.
3. DIMENSIONING IN ACCORD WITH ASH-114, 3M-1982
4. ALL DIMENSIONS ARE IN INCHES.

ME-384956 ITEM 10

MATERIAL: SEE PARTS LIST

FERMI NATIONAL ACCELERATOR LABORATORY
 UNITED STATES DEPARTMENT OF ENERGY

PPD/MECHANICAL SUPPORT
 CDMS BREAKOUT BOX
 CONNECTOR HOLDER SUB ASSY "B"

SCALE: 1/2
 DRAWING NUMBER: 9213.300-MC-397173
 SHEET NO.: 1 OF 1
 REV.: C

1 2 3 4 h1db.dwg