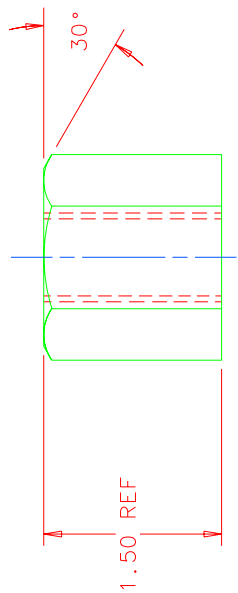
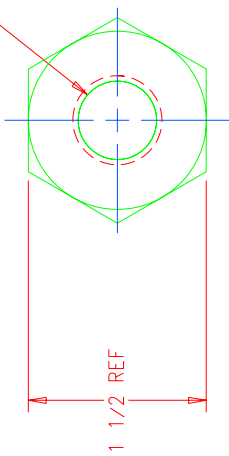


DRILL THRU 41/64 THRU
TAP 3/4-10UNC-2B THRU



| | | | |
|------|-------------|----------|------|
| REV. | DESCRIPTION | DRAWN | DATE |
| | | APPROVED | |

| | | | |
|----------|----------|---------------------|-----------|
| ITEM NO. | PART NO. | DESCRIPTION OR SIZE | QTY. REQ. |
|----------|----------|---------------------|-----------|

PARTS LIST

| UNLESS OTHERWISE SPECIFIED | | ORIGINATOR | SCHMITT |
|--|------|--|----------|
| .XX | .XXX | DRAWN | F. YOFFE |
| ± .01 | ± — | CHECKED | |
| | ± 1° | APPROVED | |
| 1. BREAK ALL SHARP EDGES .015 MAX. | | USED ON | |
| 2. DO NOT SCALE DRWG. DIMENSIONS IN ACCORD WITH INST Y14.5M-1982 STD'S | | MC-397307 | |
| 3. ALL DIMENSIONS ARE IN INCHES. | | MATERIAL | |
| 125 ✓ MAX. ALL MACHINED SURFACES | | ALUMINUM HEXAGON 6061-T6 1 1/2 X 1.50 LG | |



FERMI NATIONAL ACCELERATOR LABORATORY
UNITED STATES DEPARTMENT OF ENERGY

PPD/MECHANICAL SUPPORT
CDMS, LID LIFTING FIXTURE,
HUB

| | | | |
|-------|--------------------|-----------|------|
| SCALE | DRAWING NUMBER | SHEET NO. | REV. |
| FULL | 9213.300-MB-397310 | 1 OF 1 | |