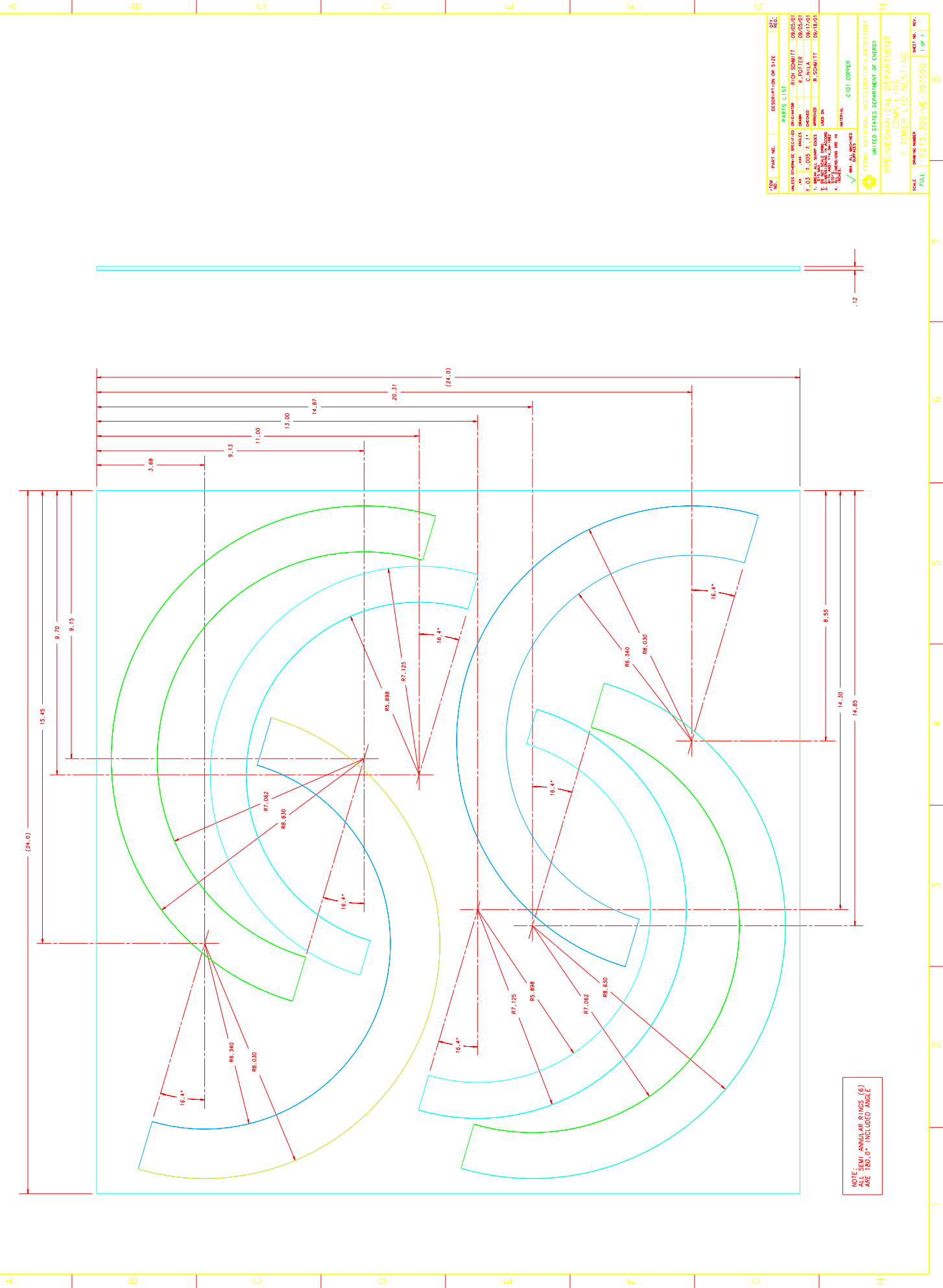


REV.	DESCRIPTION	DRAWN	DATE
8		APPROVED	



NOTE: EQUI-ANGULAR SPACES (E) ARE 180.0° INCLUDED ANGLE

ITEM	PART NO.	DESCRIPTION OR SIZE	REV.
PARTS LIST			
UNLESS OTHERWISE SPECIFIED DIMENSIONS ARE IN INCHES			
1	R. COTTER	09/05/01	
2	R. SCREW	09/05/01	
3	R. SCREW	09/05/01	
4	R. SCREW	09/18/01	
MATERIAL: C101 COPPER			
FERRI NATIONAL ACCELERATOR LABORATORY UNITED STATES DEPARTMENT OF ENERGY PPD/MECHANICAL DEPARTMENT GDMS L105 7 TOWER LID NEST INC			
SCALE	DRAWING NUMBER	REV.	
FULL	32131.500-ME-397590	0 OF 1	8