
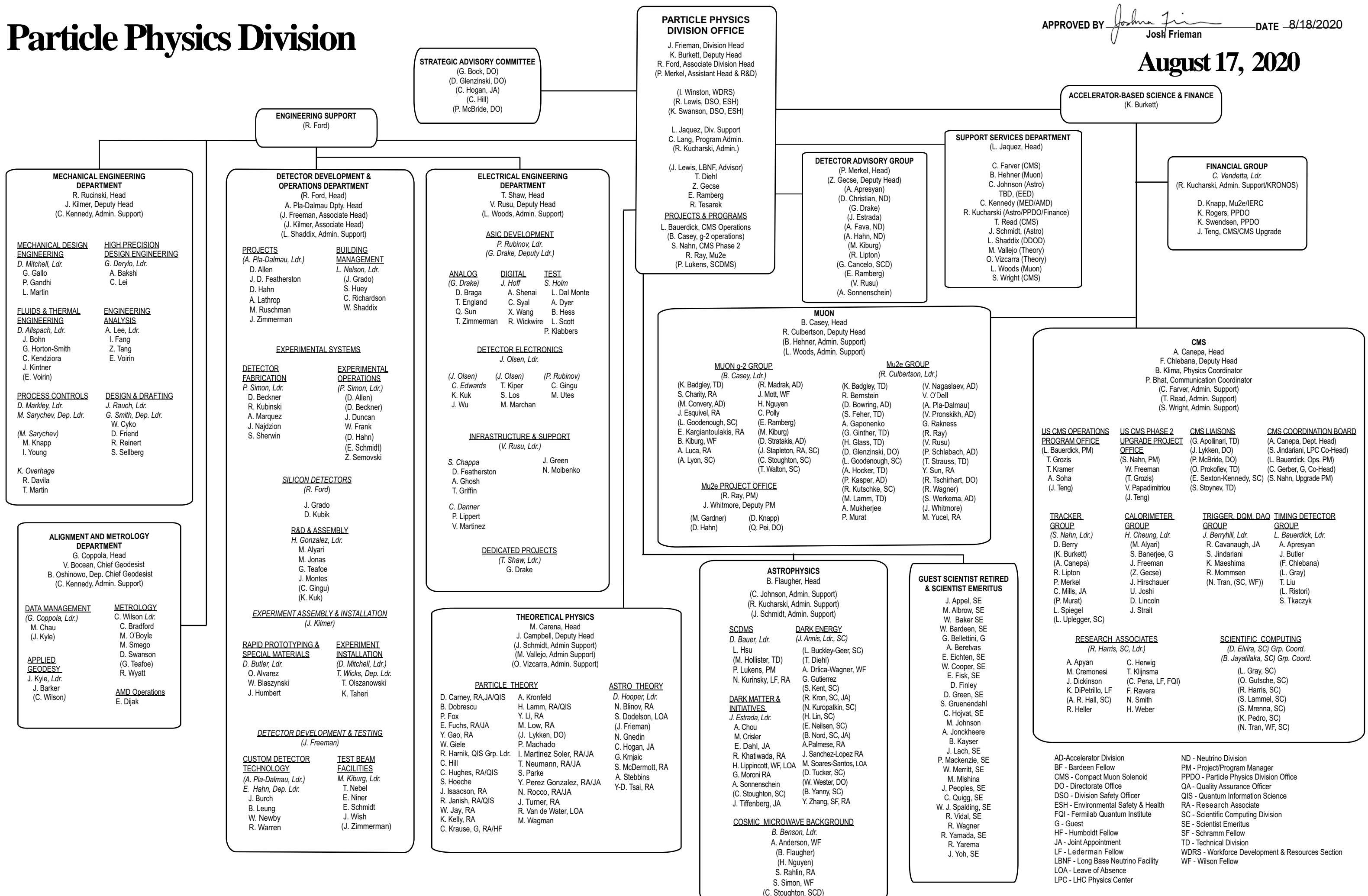


# Particle Physics Division

APPROVED BY  DATE 8/18/2020  
 Josh Frieman

**August 17, 2020**



**STRATEGIC ADVISORY COMMITTEE**  
 (G. Bock, DO)  
 (D. Glenzinski, DO)  
 (C. Hogan, JA)  
 (C. Hill)  
 (P. McBride, DO)

**PARTICLE PHYSICS DIVISION OFFICE**  
 J. Frieman, Division Head  
 K. Burkett, Deputy Head  
 R. Ford, Associate Division Head  
 (P. Merkel, Assistant Head & R&D)

(I. Winston, WDRS)  
 (R. Lewis, DSO, ESH)  
 (K. Swanson, DSO, ESH)

L. Jaquez, Div. Support  
 C. Lang, Program Admin.  
 (R. Kucharski, Admin.)

(J. Lewis, LBNF, Advisor)  
 T. Diehl  
 Z. Gecse  
 E. Ramberg  
 R. Tesarek

**PROJECTS & PROGRAMS**  
 L. Bauerdick, CMS Operations  
 (B. Casey, g-2 operations)  
 S. Nahn, CMS Phase 2  
 R. Ray, Mu2e  
 (P. Lukens, SCDMS)

**ACCELERATOR-BASED SCIENCE & FINANCE**  
 (K. Burkett)

**ENGINEERING SUPPORT**  
 (R. Ford)

**MECHANICAL ENGINEERING DEPARTMENT**  
 R. Rucinski, Head  
 J. Kilmer, Deputy Head  
 (C. Kennedy, Admin. Support)

**MECHANICAL DESIGN ENGINEERING**  
 D. Mitchell, Ldr.  
 G. Gallo  
 P. Gandhi  
 L. Martin

**HIGH PRECISION DESIGN ENGINEERING**  
 G. Derylo, Ldr.  
 A. Bakshi  
 C. Lei

**FLUIDS & THERMAL ENGINEERING**  
 D. Allspach, Ldr.  
 J. Bohn  
 G. Horton-Smith  
 C. Kendziora  
 J. Kintner  
 (E. Voirin)

**ENGINEERING ANALYSIS**  
 A. Lee, Ldr.  
 I. Fang  
 Z. Tang  
 E. Voirin

**PROCESS CONTROLS**  
 D. Markley, Ldr.  
 M. Sarychev, Dep. Ldr.  
 (M. Sarychev)  
 M. Knapp  
 I. Young  
 K. Overhage  
 R. Davila  
 T. Martin

**DESIGN & DRAFTING**  
 J. Rauch, Ldr.  
 G. Smith, Dep. Ldr.  
 D. Friend  
 R. Reinert  
 S. Selberg

**DETECTOR DEVELOPMENT & OPERATIONS DEPARTMENT**  
 (R. Ford, Head)  
 A. Pla-Dalmau Dpty. Head  
 (J. Freeman, Associate Head)  
 (J. Kilmer, Associate Head)  
 (L. Shaddix, Admin. Support)

**PROJECTS**  
 (A. Pla-Dalmau, Ldr.)  
 D. Allen  
 J. D. Featherston  
 D. Hahn  
 A. Lathrop  
 M. Ruschman  
 J. Zimmerman

**BUILDING MANAGEMENT**  
 L. Nelson, Ldr.  
 (J. Grado)  
 S. Huey  
 C. Richardson  
 W. Shaddix

**EXPERIMENTAL SYSTEMS**

**DETECTOR FABRICATION**  
 P. Simon, Ldr.  
 D. Beckner  
 R. Kubinski  
 A. Marquez  
 J. Najdzion  
 S. Sherwin

**EXPERIMENTAL OPERATIONS**  
 (P. Simon, Ldr.)  
 (D. Allen)  
 (D. Beckner)  
 J. Duncan  
 W. Frank  
 (D. Hahn)  
 (E. Schmidt)  
 Z. Semovski

**SILICON DETECTORS**  
 (R. Ford)  
 J. Grado  
 D. Kubik

**R&D & ASSEMBLY**  
 H. Gonzalez, Ldr.  
 M. Alyari  
 M. Jonas  
 G. Teafoe  
 J. Montes  
 (C. Gingu)  
 (K. Kuk)

**EXPERIMENT ASSEMBLY & INSTALLATION**  
 (J. Kilmer)

**RAPID PROTOTYPING & SPECIAL MATERIALS**  
 D. Butler, Ldr.  
 O. Alvarez  
 W. Blaszyński  
 J. Humbert

**EXPERIMENT INSTALLATION**  
 (D. Mitchell, Ldr.)  
 T. Wicks, Dep. Ldr.  
 T. Olszanowski  
 K. Taheri

**DETECTOR DEVELOPMENT & TESTING**  
 (J. Freeman)

**CUSTOM DETECTOR TECHNOLOGY**  
 (A. Pla-Dalmau, Ldr.)  
 E. Hahn, Dep. Ldr.  
 J. Burch  
 B. Leung  
 W. Newby  
 R. Warren

**TEST BEAM FACILITIES**  
 M. Kiburg, Ldr.  
 T. Nebel  
 E. Niner  
 E. Schmidt  
 J. Wish  
 (J. Zimmerman)

**ELECTRICAL ENGINEERING DEPARTMENT**  
 T. Shaw, Head  
 V. Rusu, Deputy Head  
 (L. Woods, Admin. Support)

**ASIC DEVELOPMENT**  
 P. Rubinov, Ldr.  
 (G. Drake, Deputy Ldr.)

**ANALOG**  
 (G. Drake)  
 D. Braga  
 T. England  
 Q. Sun  
 T. Zimmerman

**DIGITAL**  
 J. Hoff  
 A. Shenai  
 C. Syal  
 X. Wang  
 R. Wickwire

**TEST**  
 S. Holm  
 L. Dal Monte  
 A. Dyer  
 B. Hess  
 L. Scott  
 P. Klabbers

**DETECTOR ELECTRONICS**  
 J. Olsen, Ldr.

(J. Olsen) (J. Olsen) (P. Rubinov)  
 C. Edwards T. Kiper C. Gingu  
 K. Kuk S. Los M. Utes  
 J. Wu M. Marchan

**INFRASTRUCTURE & SUPPORT**  
 (V. Rusu, Ldr.)  
 S. Chappa J. Green  
 D. Featherston N. Moibenko  
 A. Ghosh  
 T. Griffin  
 C. Danner  
 P. Lippert  
 V. Martinez

**DEDICATED PROJECTS**  
 (T. Shaw, Ldr.)  
 G. Drake

**MUON**  
 B. Casey, Head  
 R. Culbertson, Deputy Head  
 (B. Hehner, Admin. Support)  
 (L. Woods, Admin. Support)

**MUON g-2 GROUP**  
 (B. Casey, Ldr.)  
 (K. Badgley, TD)  
 S. Charity, RA  
 (M. Convery, AD)  
 J. Esquivel, RA  
 (L. Goodenough, SC)  
 E. Kargiantoulakis, RA  
 B. Kiburg, WF  
 A. Luca, RA  
 (A. Lyon, SC)

(R. Madrak, AD)  
 J. Mott, WF  
 H. Nguyen  
 C. Polly  
 (E. Ramberg)  
 (M. Kiburg)  
 (D. Stratakis, AD)  
 (J. Stapleton, RA, SC)  
 (C. Stoughton, SC)  
 (T. Walton, SC)

**Mu2e PROJECT OFFICE**  
 (R. Ray, PM)  
 J. Whitmore, Deputy PM  
 (M. Gardner) (D. Knapp)  
 (D. Hahn) (Q. Pei, DO)

**Mu2e GROUP**  
 (R. Culbertson, Ldr.)  
 (V. Nagaslaev, AD)  
 V. O'Dell  
 (A. Pla-Dalmau)  
 (V. Pronskikh, AD)  
 G. Rakness  
 (R. Ray)  
 (V. Rusu)  
 (P. Schlabach, AD)  
 (T. Strauss, TD)  
 Y. Sun, RA  
 (R. Tschirhart, DO)  
 (R. Wagner)  
 (S. Werkema, AD)  
 (J. Whitmore)  
 M. Yucel, RA

**SUPPORT SERVICES DEPARTMENT**  
 (L. Jaquez, Head)

C. Farver (CMS)  
 B. Hehner (Muon)  
 C. Johnson (Astro)  
 TBD, (EED)  
 C. Kennedy (MED/AMD)  
 R. Kucharski (Astro/PPDO/Finance)  
 T. Read (CMS)  
 J. Schmidt, (Astro)  
 L. Shaddix (DDOD)  
 M. Vallejo (Theory)  
 O. Vizcarra (Theory)  
 L. Woods (Muon)  
 S. Wright (CMS)

**FINANCIAL GROUP**  
 C. Vendetta, Ldr.  
 (R. Kucharski, Admin. Support/KRONOS)

D. Knapp, Mu2e/IERC  
 K. Rogers, PPDO  
 K. Swendsen, PPDO  
 J. Teng, CMS/CMS Upgrade

**ALIGNMENT AND METROLOGY DEPARTMENT**  
 G. Coppola, Head  
 V. Bocean, Chief Geodesist  
 B. Oshinowo, Dep. Chief Geodesist  
 (C. Kennedy, Admin. Support)

**DATA MANAGEMENT**  
 (G. Coppola, Ldr.)  
 M. Chau  
 (J. Kyle)

**METROLOGY**  
 C. Wilson Ldr.  
 C. Bradford  
 M. O'Boyle  
 M. Smego  
 D. Swanson  
 (G. Teafoe)  
 R. Wyatt

**APPLIED GEODESY**  
 J. Kyle, Ldr.  
 J. Barker  
 (C. Wilson)

**AMD Operations**  
 E. Djak

**THEORETICAL PHYSICS**  
 M. Carena, Head  
 J. Campbell, Deputy Head  
 (J. Schmidt, Admin Support)  
 (M. Vallejo, Admin Support)  
 (O. Vizcarra, Admin. Support)

**PARTICLE THEORY**  
 D. Carney, RA,JA/QIS  
 B. Dobrescu  
 P. Fox  
 E. Fuchs, RA/JA  
 Y. Gao, RA  
 W. Giele  
 R. Harnik, QIS Grp. Ldr.  
 C. Hill  
 C. Hughes, RA/QIS  
 S. Hoeche  
 J. Isaacson, RA  
 R. Janish, RA/QIS  
 W. Jay, RA  
 K. Kelly, RA  
 C. Krause, G, RA/HF

A. Kronfeld  
 H. Lamm, RA/QIS  
 Y. Li, RA  
 M. Low, RA  
 (J. Lykken, DO)  
 P. Machado  
 I. Martinez Soler, RA/JA  
 T. Neumann, RA/JA  
 S. Parke  
 Y. Perez Gonzalez, RA/JA  
 N. Rocco, RA/JA  
 J. Turner, RA  
 R. Van de Water, LOA  
 M. Wagman

**ASTRO THEORY**  
 D. Hooper, Ldr.  
 N. Blinov, RA  
 S. Dodelson, LOA  
 (J. Frieman)  
 N. Gnedin  
 C. Hogan, JA  
 G. Krnjaic  
 S. McDermott, RA  
 A. Stebbins  
 Y-D. Tsai, RA

**ASTROPHYSICS**  
 B. Flaugher, Head  
 (C. Johnson, Admin. Support)  
 (R. Kucharski, Admin. Support)  
 (J. Schmidt, Admin. Support)

**SCDMs**  
 D. Bauer, Ldr.  
 L. Hsu  
 (M. Hollister, TD)  
 P. Lukens, PM  
 N. Kurinsky, LF, RA

**DARK ENERGY**  
 (J. Annis, Ldr., SC)  
 (L. Buckley-Geer, SC)  
 (T. Diehl)  
 A. Drlica-Wagner, WF  
 G. Gutierrez  
 (S. Kent, SC)  
 (R. Kron, SC, JA)  
 (N. Kuropatkin, SC)  
 (H. Lin, SC)  
 (E. Neilsen, SC)  
 (B. Nord, SC, JA)  
 A. Palmese, RA  
 J. Sanchez-Lopez RA  
 M. Soares-Santos, LOA  
 (D. Tucker, SC)  
 (W. Wester, DO)  
 (B. Yanny, SC)  
 Y. Zhang, SF, RA

**DARK MATTER & INITIATIVES**  
 J. Estrada, Ldr.  
 A. Chou  
 M. Crisler  
 E. Dahl, JA  
 R. Khatiwada, RA  
 H. Lippincott, WF, LOA  
 G. Moroni RA  
 A. Sonnenschein  
 (C. Stoughton, SC)  
 J. Tiffenberg, JA

**COSMIC MICROWAVE BACKGROUND**  
 B. Benson, Ldr.  
 A. Anderson, WF  
 (B. Flaugher)  
 (H. Nguyen)  
 S. Rahlén, RA  
 S. Simon, WF  
 (C. Stoughton, SCD)

**CMS**  
 A. Canepa, Head  
 F. Chlebana, Deputy Head  
 B. Klima, Physics Coordinator  
 P. Bhat, Communication Coordinator  
 (C. Farver, Admin. Support)  
 (T. Read, Admin. Support)  
 (S. Wright, Admin. Support)

**US CMS OPERATIONS PROGRAM OFFICE**  
 (L. Bauerdick, PM)  
 T. Grozis  
 T. Kramer  
 A. Soha  
 (J. Teng)

**US CMS PHASE 2 UPGRADE PROJECT OFFICE**  
 (S. Nahn, PM)  
 (T. Grozis)  
 V. Papadimitriou  
 (J. Teng)

**CMS LIAISONS**  
 (J. Apollinari, TD)  
 (J. Lykken, DO)  
 (P. McBride, DO)  
 (O. Prokofiev, TD)  
 (E. Sexton-Kennedy, SC)  
 (S. Stoynev, TD)

**CMS COORDINATION BOARD**  
 (A. Canepa, Dept. Head)  
 (S. Jindariani, LPC Co-Head)  
 (L. Bauerdick, Ops. PM)  
 (C. Gerber, G. Co-Head)  
 (S. Nahn, Upgrade PM)

**TRACKER GROUP**  
 (S. Nahn, Ldr.)  
 D. Berry  
 (K. Burkett)  
 (A. Canepa)  
 R. Lipton  
 P. Merkel  
 C. Mills, JA  
 (P. Murat)  
 L. Spiegel  
 (L. Uplegger, SC)

**CALORIMETER GROUP**  
 H. Cheung, Ldr.  
 (M. Alyari)  
 S. Banerjee, G  
 J. Freeman  
 (Z. Gecse)  
 J. Hirschauer  
 U. Joshi  
 D. Lincoln  
 J. Strait

**TRIGGER, DOM, DAO GROUP**  
 J. Berryhill, Ldr.  
 R. Cavanaugh, JA  
 S. Jindariani  
 K. Maeshima  
 R. Mommsen  
 (N. Tran, (SC, WF))

**TIMING DETECTOR GROUP**  
 L. Bauerdick, Ldr.  
 A. Apresyan  
 J. Butler  
 (F. Chlebana)  
 (L. Gray)  
 T. Liu  
 (L. Ristori)  
 S. Tkaczyk

**RESEARCH ASSOCIATES**  
 (R. Harris, SC, Ldr.)  
 A. Apyan  
 M. Cremonesi  
 J. Dickinson  
 K. DiPetrillo, LF  
 (A. R. Hall, SC)  
 R. Heller

C. Herwig  
 T. Klijnsma  
 (C. Pena, LF, FQI)  
 F. Ravera  
 N. Smith  
 H. Weber

**SCIENTIFIC COMPUTING**  
 (D. Elvira, SC) Grp. Coord.  
 (B. Jayatilaka, SC) Grp. Coord.  
 (L. Gray, SC)  
 (O. Gutsche, SC)  
 (R. Harris, SC)  
 (S. Lammel, SC)  
 (S. Mrenna, SC)  
 (K. Pedro, SC)  
 (N. Tran, WF, SC)

AD - Accelerator Division  
 BF - Bardeen Fellow  
 CMS - Compact Muon Solenoid  
 DO - Directorate Office  
 DSO - Division Safety Officer  
 ESH - Environmental Safety & Health  
 FQI - Fermilab Quantum Institute  
 G - Guest  
 HF - Humboldt Fellow  
 JA - Joint Appointment  
 LF - Lederman Fellow  
 LBNF - Long Base Neutrino Facility  
 LOA - Leave of Absence  
 LPC - LHC Physics Center

ND - Neutrino Division  
 PM - Project/Program Manager  
 PPDO - Particle Physics Division Office  
 QA - Quality Assurance Officer  
 QIS - Quantum Information Science  
 RA - Research Associate  
 SC - Scientific Computing Division  
 SE - Scientist Emeritus  
 SF - Schramm Fellow  
 TD - Technical Division  
 WDRS - Workforce Development & Resources Section  
 WF - Wilson Fellow